



A **valmont** COMPANY



VALVE BOX CATALOGUE



Buy Green
Buy Recycled
Buy Local

hrproducts.com.au



CONTACT US



ADDRESS



PHONE



EMAIL

PERTH (Head Office)

207 Bannister Road
Canning Vale
WA 6155

PH: 08 9484 6500
FAX: 08 9455 1680

hrsales@hrproducts.com.au

ADELAIDE

Cnr Wilson Street &
Frederick Road
Royal Park
SA 5014

PH: 08 8408 7200
FAX: 08 8341 0707

infos@hrproducts.com.au

MELBOURNE

Cnr Waterdale Road &
Vernon Avenue
Heidelberg Heights
VIC 3081

PH: 03 8458 7400
FAX: 03 9457 7400

infovic@hrproducts.com.au

SYDNEY

Unit 2, 8 - 9 Lagana Place
Wetherill Park
NSW 2164

PH: 02 9616 1300
FAX: 02 9725 5283

infonsw@hrproducts.com.au

BRISBANE

93-103 Chetwynd Street
Loganholme
QLD 4129

PH: 07 3080 6200
FAX: 07 3806 0533

infoqld@hrproducts.com.au



A **valmont** COMPANY

TABLE OF CONTENTS



HR PRODUCTS MANUFACTURED VALVE BOXES

Product Quick Reference Guide	4
NEW Commercial Valve Box	7
Commercial Valve Box - Round	11
Commercial Valve Box - Square	12
Hydrant Cover Valve Box	13
Domestic Valve Box - Round	15
Domestic Valve Box - Square	17
Domestic Valve Box - Rectangular	19

DURA VALVE BOXES - Imported

Round Valve Box	22
Rectangular Valve Box.....	23

NDS VALVE BOXES - Imported

Round Valve Box	26
Rectangular Valve Box.....	27

AEP VALVE BOXES - Imported

Rectangular Valve Box.....	30
----------------------------	----

PRODUCT QUICK REFERENCE

HR PRODUCTS MANUFACTURED VALVE BOXES



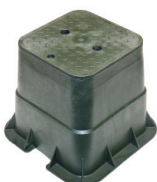
Part Number: HR1419-12VBOLN	Part Number: HR1419-12VBOLNBB	Part Number: HR1419-8VBOLN	Part Number: HR1419-6VBOLN	Part Number: HR1419-12VBOLNRW
Description: 435(L)x302(W)x315(H)	Description: 435(L)x302(W)x315(H)	Description: 435(L)x302(W)x220(H)	Description: 435(L)x302(W)x180(H)	Description: 435(L)x302(W)x315(H)
Weight: 4.3kg	Weight: 4.55kg	Weight: 3.65kg	Weight: 3.3kg	Weight: 4.25kg
Per Pallet: 90	Per Pallet: 60	Per Pallet: 120	Per Pallet: 120	Per Pallet: 90



Part Number: HR1419-8VBOLNRW	Part Number: HR1419-6VBOLNRW	Part Number: HR1419-12VBOLNWM	Part Number: HR1419-8VBOLNWM	Part Number: HR1419-6VBOLNWM
Description: 435(L)x302(W)x220(H)	Description: 435(L)x302(W)x180(H)	Description: 435(L)x302(W)x315(H)	Description: 435(L)x302(W)x220(H)	Description: 435(L)x302(W)x180(H)
Weight: 3.65kg	Weight: 3.3kg	Weight: 4.2kg	Weight: 3.65kg	Weight: 3.3kg
Per Pallet: 120	Per Pallet: 120	Per Pallet: 90	Per Pallet: 120	Per Pallet: 120



Part Number: HR0910VB	Part Number: HR0910VB-GAS	Part Number: HR0910VB-SEWER	Part Number: HR0910VB-SWATER	Part Number: HR0910BRW
Description: 250(W)x255(H)	Description: 250(W)x255(H)	Description: 250(W)x255(H)	Description: 250(W)x255(H)	Description: 250(W)x255(H)
Weight: 1.75kg	Weight: 1.75kg	Weight: 1.75kg	Weight: 1.75kg	Weight: 1.58kg
Per Pallet: 150	Per Pallet: 150	Per Pallet: 150	Per Pallet: 150	Per Pallet: 150



Part Number: HR909VB	Part Number: HR1419-12HYDASSY	Part Number: HR1419-12HYDVB	Part Number: HR-SPOTTERBOX	Part Number: HR06TLA
Description: 215(L)x215(W)x260(H)	Description: 430(L)x300(W)x305(H)	Description: 430(L)x300(W)x305(H)	Description: 135(W)x150(H)	Description: 130(W)x160(H)
Weight: 1.3kg	Weight: 8.4kg	Weight: 7kg	Weight: 0.2kg	Weight: 0.2kg
Per Pallet: 100	Per Pallet: 50	Per Pallet: 50	Per Pallet: 720	Per Pallet: 1000



Note: All sizes above shown in mm

PRODUCT QUICK REFERENCE

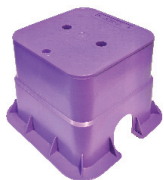
HR PRODUCTS MANUFACTURED VALVE BOXES



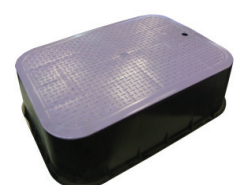
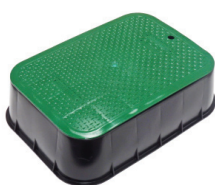
Part Number: HR0690-SVB	Part Number: HR-0690-SVBSE	Part Number: 0690VB	Part Number: HR0690-SVBRW	Part Number: 0690VBRW
Description: 170(W)x160(H)	Description: 170(W)x155(H)	Description: 170(W)x160(H)	Description: 170(W)x160(H)	Description: 170(W)x220(H)
Weight: 0.32kg	Weight: 0.24kg	Weight: 0.43kg	Weight: 0.32kg	Weight: 0.42kg
Per Pallet: 700	Per Pallet: 700	Per Pallet: 400	Per Pallet: 700	Per Pallet: 400



Part Number: HR606-6SQVB	Part Number: HR606SQVB	Part Number: HR909-8VB	Part Number: HR909SQVB	Part Number: HR606-6SQVBRW
Description: 152(L)x152(W)x160(H)	Description: 152(L)x152(W)x215(H)	Description: 215(L)x215(W)x210(H)	Description: 215(L)x215(W)x260(H)	Description: 152(L)x152(W)x160(H)
Weight: 0.42kg	Weight: 0.54kg	Weight: 0.92kg	Weight: 1.41kg	Weight: 0.41kg
Per Pallet: 400	Per Pallet: 250	Per Pallet: 150	Per Pallet: 100	Per Pallet: 400



Part Number: HR606SQVBRW	Part Number: HR909-8VBRW	Part Number: HR909SQVBRW	Part Number: HR906VB	Part Number: HR1419-6VB
Description: 152(L)x152(W)x215(H)	Description: 215(L)x215(W)x210(H)	Description: 215(L)x215(W)x260(H)	Description: 220(L)x155(W)x215(H)	Description: 425(L)x295(W)x165(H)
Weight: 0.54kg	Weight: 0.93kg	Weight: 1.41kg	Weight: 0.56kg	Weight: 1.57kg
Per Pallet: 250	Per Pallet: 150	Per Pallet: 100	Per Pallet: 380	Per Pallet: 104



Part Number: HR1419-7VBOL	Part Number: HR1420-6VBOL	Part Number: HR906VBRW	Part Number: HR1419-6VBRW	Part Number: HR1420-6VBOLRW
Description: 430(L)x295(W)x190(H)	Description: 550(L)x390(W)x165(H)	Description: 220(L)x155(W)x215(H)	Description: 425(L)x295(W)x165(H)	Description: 550(L)x390(W)x165(H)
Weight: 1.6kg	Weight: 2.62kg	Weight: 0.56kg	Weight: 1.55kg	Weight: 2.58kg
Per Pallet: 104	Per Pallet: 52	Per Pallet: 380	Per Pallet: 104	Per Pallet: 52



Note: All sizes above shown in mm



A valmont  COMPANY

MANUFACTURED VALVE BOXES



NEW COMMERCIAL VALVE BOX

Protects in-ground irrigation valves, functions as a durable enclosure that provides easy access to valves for maintenance.

Used in turf applications to house either single valves, multiple valves, or other subsurface components of an irrigation system.

FEATURES



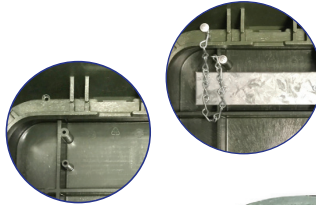
- 100% Australian Made
- Moulded from 100% recycled High Density Polyethylene Materials (HDPE)
- Light weight robust construction for long life and strong performance
- NEW Plastic Locking Bolt - no special key is needed (a standard set of pliers is all that is required)
- Optional Plug instead of Locking Bolt - if lockable box is not required
- Reinforced Side Ridges - for long life and strong performance
- NEW Improved Non Slip Surface Pattern - meets AS 4586 Wet Slip resistance rating (NATA Approved Testing Facility)
- Broad Base Version - for better in-ground surface area contact and stability in lighter compacted soil environments
- Metal Plate Option - can be fitted to underside of lid for easy location if valve box is buried
- Personalised customer detail option / special application marking & colouring (available on request)**
- Reclaimed water detail / option - Entire box and lid in purple with optional extra customer detail upon request**
- Chain connection fixing points on the underside of the lid and box to secure them together if required (chain not supplied)
- The 12" Valve box is interlockable when placed together (base to base) for deeper installation when required
- Suitable for general light commercial applications*

* Please consult your local authority for load rating requirements for sites with heavy vehicular traffic site access. A higher graded product may be required.

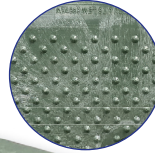
** Minimum quantity buys apply. Please refer to your Sales Manager for further details.

FEATURES

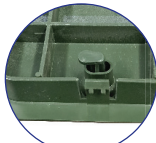
Chain Connection Fixing Points
- keeps the lid connected to the valve box
(image shows optional metal plate for easy valve box location)



NEW Improved Non Slip Surface Pattern - meets AS 4586 Wet Slip resistance rating (NATA Approved Testing Facility)



NEW Plastic Locking Bolt - no special key is needed (a standard set of pliers is all that is required)



Lock Mechanism under lid



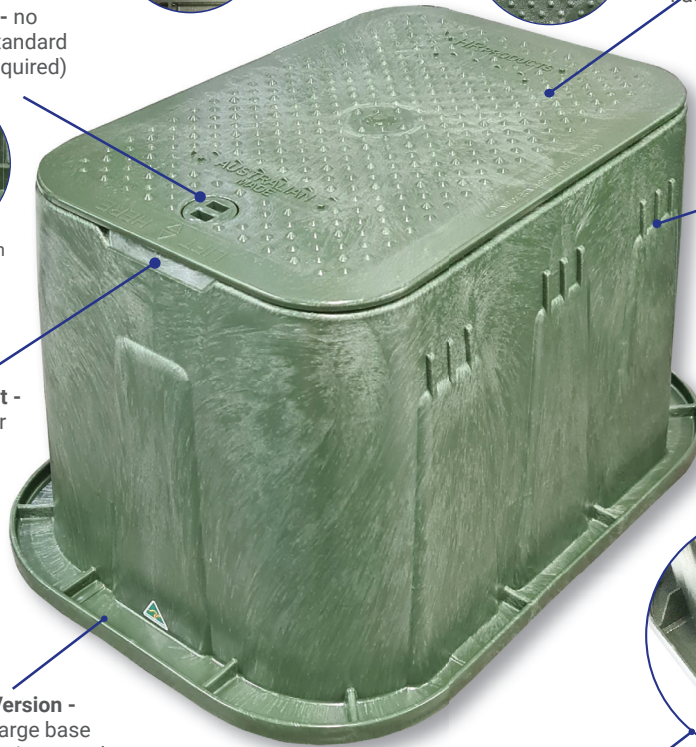
Valve Box Lock Bolt

Reinforced Side Ridges - for long life and strong performance

Manufactured from - Recycled High Density Polyethylene Materials (HDPE)



Lid Removal Access Slot - makes lid removal easier with this special design access slot



Standard Base Version - smarter design large base footprint for extra in-ground stability
Base Lip Width: 32mm x 22mm



Valve Box Internal Image



Optional Valve Box Plug

Broad Base Version - for better in-ground surface area contact and stability in lighter compacted soil environments
Base Lip Width: 50mm x 50mm



	EXTERNAL DIMENSIONS (MM)					INTERNAL DIMENSIONS (MM)	
	TOP LENGTH	TOP WIDTH	HEIGHT	BOTTOM LENGTH	BOTTOM WIDTH	CLEAR ACCESS TOP OPENING	INTERNAL BASE OPENING

HR MANUFACTURED COMMERCIAL VALVE BOX							
HR1419-12VBOLN - 12" Standard Model	435	302	315	575	417	355 x 235	490 X 355
HR1419-12VBOLNBB - 12" Broad Base	435	302	315	610	473	355 x 235	490 x 355
HR1419-8VBOLN - 8" Standard Model	435	302	220	556	400	355 x 235	470 x 335
HR1419-6VBOLN - 6" Standard Model	435	302	180	548	390	355 x 235	463 x 327

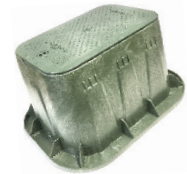
NEW COMMERCIAL VALVE BOX

COMMERCIAL BOX RECTANGLE - KEY LOCKABLE

CODE	DESCRIPTION	DISC CODE	CTN/PLT QTY
HR1419-12VBOLN	435mm Length x 302mm Width x 315mm Height	B5	1/90
HR1419-12VBOLNA	435mm Length x 302mm Width x 315mm Height - Arch	B5	1/90
HR1419-12VBOLNBB	435mm Length x 302mm Width x 315mm Height - Broad Base	B5	1/60
HR1419-8VBOLN	435mm Length x 302mm Width x 220mm Height	B5	1/120
HR1419-6VBOLN	435mm Length x 302mm Width x 180mm Height	B5	1/120
HR14190LN	Lid only for HR1419-XXVBOLN - all models	B5	1/-
HR1419-12BN	Body only for HR1419-12VBOLN	B5	1/90
HR1419-12BBN	Body only for HR1419-12VBOLBB - Broad Base	B5	1/60
HR1419-8BN	Body only for HR1419-8VBOLN	B5	1/120
HR1419-6BN	Body only for HR1419-6VBOLN	B5	1/120
HR1419NBOLT	Locking Bolt	B5	1/-
HR1419NPLUG	Blank Plug inserts into locking bolt hole when bolt is not required	B5	1/-



HR1419-12VBOLN



HR1419-12VBOLNBB



HR1419-8VBOLN

COMMERCIAL BOX RECTANGLE - RECLAIMED WATER - KEY LOCKABLE

CODE	DESCRIPTION	DISC CODE	CTN/PLT QTY
HR1419-12VBOLNRW	435mm Length x 302mm Width x 315mm Height - RW	B5	1/90
HR1419-12VBOLNBBRW	435mm Length x 302mm Width x 315mm Height - RW Broad Base	B5	1/60
HR1419-8VBOLNRW	435mm Length x 302mm Width x 220mm Height - RW	B5	1/120
HR1419-6VBOLNRW	435mm Length x 302mm Width x 180mm Height - RW	B5	1/120
HR14190LNRW	Lid only for HR1419-XXVBOLNRW - all models	B5	1/-
HR1419-12BNRW	Body only for HR1419-12VBOLNRW	B5	1/90
HR1419-12BBNRW	Body only for HR1419-12VBOLBBRW - Broad Base	B5	1/60
HR1419-8BNRW	Body only for HR1419-8VBOLNRW	B5	1/120
HR1419-6BNRW	Body only for HR1419-6VBOLNRW	B5	1/120
HR1419NBOLTRW	Purple Locking Bolt	B5	1/-
HR1419NPLUGRW	Purple Blank Plug inserts into locking bolt hole when bolt is not required	B5	1/-



HR1419-6VBOLN



HR1419-12VBOLNRW



HR1419-6VBOLNRW

COMMERCIAL BOX RECTANGLE - WATER METER ACCESS - KEY LOCKABLE

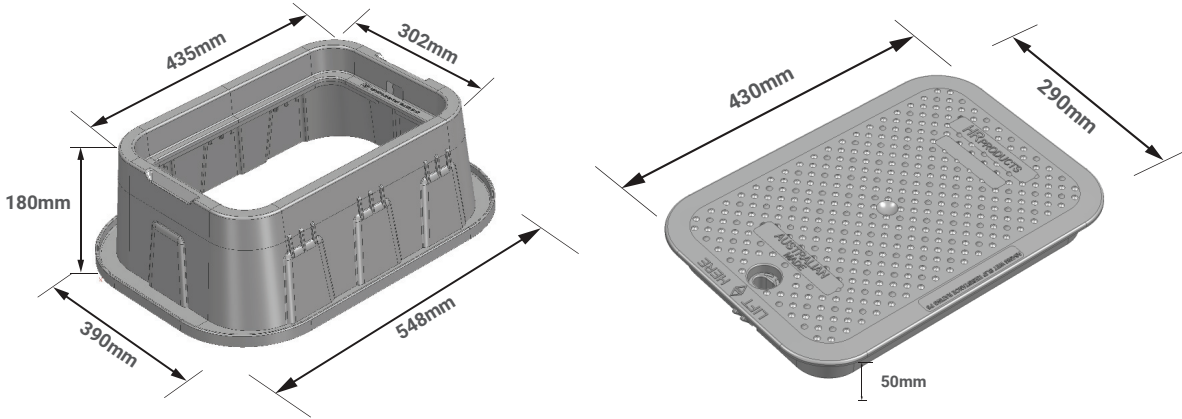
CODE	DESCRIPTION	DISC CODE	CTN/PLT QTY
HR1419-12VBOLNWM	435mm Length x 302mm Width x 315mm Height - WM	B5	1/90
HR1419-12VBOLNBBWM	435mm Length x 302mm Width x 315mm Height - WM Broad Base	B5	1/60
HR1419-8VBOLNWM	435mm Length x 302mm Width x 220mm Height - WM	B5	1/120
HR1419-6VBOLNWM	435mm Length x 302mm Width x 180mm Height - WM	B5	1/120
HR14190LNWM	Lid only for HR1419-XXVBOLNWM models	B5	1/-



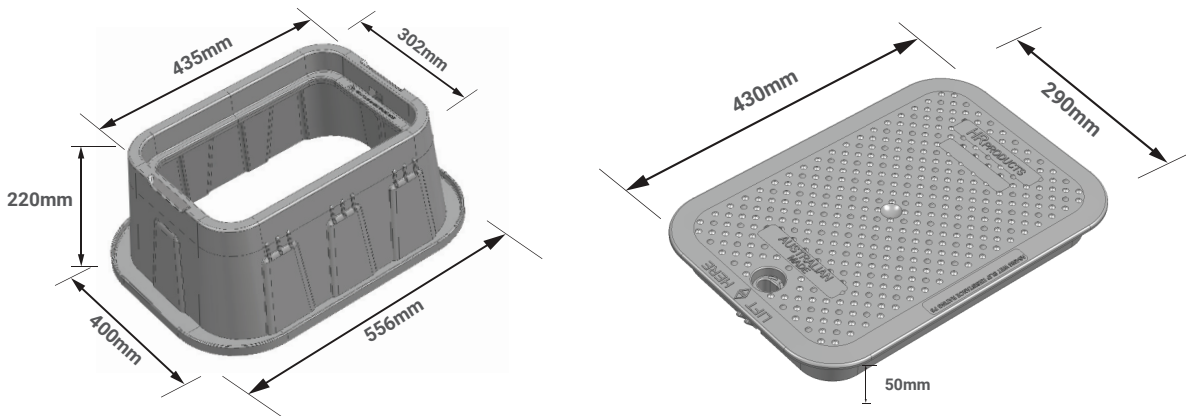
HR1419-12VBOLNWM

DIMENSIONS

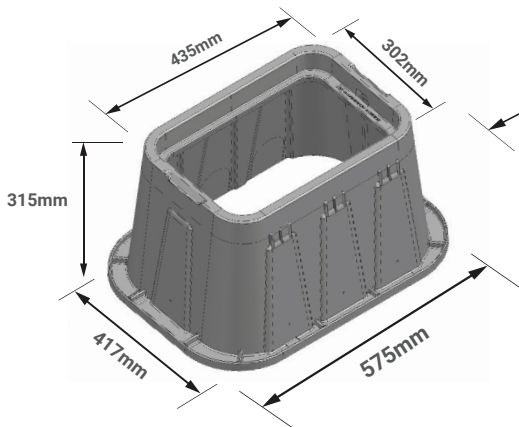
HR1419-6VBOLN - 6" Standard Model



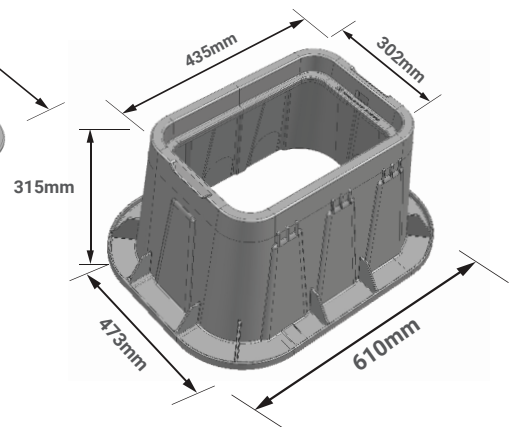
HR1419-8VBOLN - 8" Standard Model



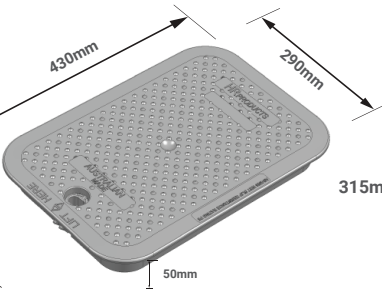
HR1419-12VBOLN - 12" Standard Model



HR1419-12VBOLBB - 12" Broad Base Model



HR14190LN



COMMERCIAL VALVE BOX - Round

Protects in-ground irrigation valves, functions as a durable enclosure that provides easy access to valves for maintenance.

Used in turf applications to house either single valves, multiple valves, or other subsurface components of an irrigation system.

FEATURES



- 100% Australian Made
- Moulded from 100% recycled High Density Polyethylene Materials (HDPE)
- Light weight robust construction for long life and strong performance
- Standard bolt or key lockable option
- Personalised customer detail option/special application marking and colouring**
- Reclaimed water detail/option - Entire box and lid in purple with optional extra customer detail upon request**
- Suitable for general light commercial applications*

COMMERCIAL BOX ROUND

CODE	DESCRIPTION	DISC CODE	CTN/PLT QTY
HR0910VB	250mm Length x 335mm Width x 255mm Height	B5	1/150
HR0910VB-GAS	250mm Length x 335mm Width x 255mm Height - Yellow Lid GAS	B5	1/150
HR0910VB-SEWER	250mm Length x 335mm Width x 255mm Height - SEWER Marking	B5	1/150
HR0910VB-SWATER	250mm Length x 335mm Width x 255mm Height - STORMWATER Marking	B5	1/150



HR0910VB



HR0910VB-GAS



HR0910VB-SEWER



HR0910VB-SWATER

COMMERCIAL BOX ROUND - LIDS and BASES

CODE	DESCRIPTION	DISC CODE	CTN/PLT QTY
HR0910L	Lid 250mm suits HR0910VB	B5	1/-
HR0910B	Base 255mm High suits HR0910VB	B5	1/-

COMMERCIAL BOX ROUND - RECLAIMED WATER

CODE	DESCRIPTION	DISC CODE	CTN/PLT QTY
HR0910VBRW	250mm Length x 335mm Width x 255mm Height - Purple Base and Lid	B5	1/150
HR0910LRW	250mm Purple Lid suits HR0910VBRW	B5	1/-
HR0910BRW	255mm High Purple Base suits HR0910VBRW	B5	1/-



HR0910VBRW

* Please consult your local authority for load rating requirements for sites with heavy vehicular traffic site access. A higher graded product may be required.

** Minimum quantity buys apply. Please refer to your Sales Manager for further details.

COMMERCIAL VALVE BOX - Square

Protects in-ground irrigation valves, functions as a durable enclosure that provides easy access to valves for maintenance.

Used in turf applications to house either single valves, multiple valves, or other subsurface components of an irrigation system.

FEATURES



- 100% Australian Made
- Moulded from 100% recycled High Density Polyethylene Materials (HDPE)
- Light weight robust construction for long life and strong performance
- Standard bolt or key lockable option
- Personalised customer detail option / special application marking and colouring**
- Suitable for general light commercial applications*

COMMERCIAL BOX SQUARE

CODE	DESCRIPTION	DISC CODE	CTN/PLT QTY
HR909VB	215mm Length x 315mm Width x 260mm Height	B5	1/100



HR909VB

COMMERCIAL BOX SQUARE - LIDS and BASES

CODE	DESCRIPTION	DISC CODE	CTN/PLT QTY
HR909L	Lid 215mm suits HR909VB	B5	1/-
HR909B	Base 260mm High suits HR909VB	B5	1/-

No reclaimed water version available in this Valve Box

	EXTERNAL DIMENSIONS (MM)					INTERNAL DIMENSIONS (MM)	
	TOP LENGTH	TOP WIDTH	HEIGHT	BOTTOM LENGTH	BOTTOM WIDTH	TOP OPENING	BASE OPENING
HR MANUFACTURED COMMERCIAL VALVE BOX - Round and Square							
HR909VB	215	215	260	315	315	190	250
HR910VB	250	250	255	335	335	215	305
HR910VB-GAS							
HR910VB-SEWER							
HR910VB-SWATER							
HR910VBRW							

* Please consult your local authority for load rating requirements for sites with heavy vehicular traffic site access. A higher graded product may be required.

** Minimum quantity buys apply. Please refer to your Sales Manager for further details.

HYDRANT COVER VALVE BOX CLASS B LOADING AS3996

HR Products Hydrant cover and frame is designed for use in housing hydrants and large valves below ground in road verges.

Constructed from high performance glass filled polypropylene material.

FEATURES



- 100% Australian Made
- Complies to Australian Standard AS3996-1992 Metal Access cover, road grates and frames
- Suitable for use within ambient temperature range -5° to +65°C and relative humidity of 5% to 95%
- Maximum weight complete Hydrant cover and base 9kg
- Cover incorporates a metal plate on underside of lid to locate buried hydrants using metal detector
- Lid contains a lock in lug on one end and a heavy duty “snap clip” on other end to hold closed
- Lid supplied for Hydrant market with following markings - FIRE HYDRANT, FOR EMERGENCY USE, PLEASE DO NOT OBSTRUCT BURY OR COVER
- UV Stabilised

HYDRANT COVER VALVE BOX AS 3996

CODE	DESCRIPTION	DISC CODE	CTN/PLT QTY
HR1419-12HYDASSY	430mm Length x 300mm Width x 315mm Height with white lid and black base plate - 645mm Length x 500mm Width	B5	1/50
HR1419-12HYDVb	430mm Length x 300mm Width x 305mm Height with white lid (NO BASE PLATE)	B5	1/50



HR1419-12HYDASSY

HYDRANT COVER VALVE BOX AS 3996 - LIDS and BASES

CODE	DESCRIPTION	DISC CODE	CTN/PLT QTY
HR1419-12HYDL	White Hydrant cover - Lid only	B5	1/-
HR1419-12HYDB	430mm Length x 300mm Width x 305mm Height - Body only	B5	1/-
HYDBASE-PLAIN	Base Plate for Hydrant cover bodies	B5	1/-
HYDBASE-ROUND	Base Plate for Hydrant cover bodies with 190mm diameter opening for single hydrant valves	B5	1/-
HYDBASE-SQUARE	Base Plate for Hydrant cover bodies with rectangular opening 402mm x 252mm	B5	1/-



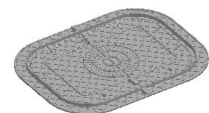
HR1419-12HYDVb



HR1419-12HYDL

HYDRANT COVER VALVE BOX AS 3996 - RECLAIMED WATER

CODE	DESCRIPTION	DISC CODE	CTN/PLT QTY
HR1419-12HYDVBRW	Reclaimed water 430mm Length x 300mm Width x 305mm Height with purple lid (NO BASE PLATE)	B5	1/50
HR1419-12HYD LRW	Reclaimed purple cover lid only	B5	1/-



HYDBASE-PLAIN

FEATURES

Hydrant Cover Metal Plate - easy to detect buried valve boxes with a metal detector

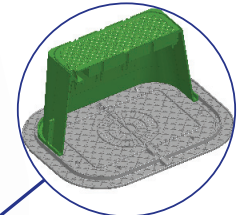
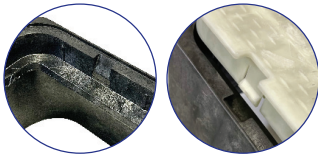


Reinforced Lid - Class B Loading to AS 3996
Lid is flush with top edge of valve box to prevent ingress of sand



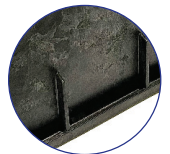
Lid Removal Access Slot - makes lid removal easier with this access slot

Inset Lid Features - lid contains a lock in lug on one side and a heavy duty "snap clip" on the other end to hold closed



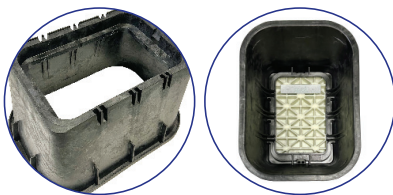
Hydrant Assembly Valve Box complete with Base (Optional)

Reinforced Side Ridges - for long life and strong performance



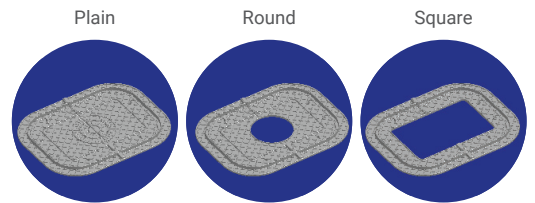
Manufactured from - High Performance Glass Filled Polypropylene material

Base Plate Dimensions
Overall Length: 645mm
Overall Width: 500mm



Valve Box Internal Images

Hydrant Valve Box Base Plate Options



	EXTERNAL DIMENSIONS (MM)					INTERNAL DIMENSIONS (MM)	
	TOP LENGTH	TOP WIDTH	HEIGHT	BOTTOM LENGTH	BOTTOM WIDTH	CLEAR ACCESS TOP OPENING	INTERNAL BASE OPENING

HYDRANT COVER VALVE BOX							
HR1419-12HYDASSY	430	300	315	545	400	340 x 220	500 x 355
HR1419-12HYDVB	430	300	305	545	400	340 x 220	500 x 355
HR1419-12HYDVBRW	430	300	305	545	400	340 x 220	500 x 355

DOMESTIC VALVE BOX - Round

Protects in-ground irrigation valves, functions as a durable enclosure that provides easy access to valves for maintenance.

Used in turf applications to house either single valves, multiple valves, or other subsurface components of an irrigation system.

FEATURES



- 100% Australian Made
- Moulded from recycled & virgin materials
- Light weight robust construction
- Personalised customer detail option / special application marking and colouring**
- Reclaimed water detail / option (purple lid/base)
- Suitable for light duty residential applications

DOMESTIC BOX ROUND

CODE	DESCRIPTION	DISC CODE	CTN /PLT QTY
HR-SPOTTERBOX	Spotter Box 135mm Length x 175mm Width x 150mm Height	B5	1/720
HR06TLA	Domestic Box 130mm Length x 205mm Width x 160mm Height	B5	1/1000
HR-0690-SVBSE	Super Econo 170mm Length x 250mm Width x 155mm Height	B5	1/700
HR0690-SVB	Econo 170mm Length x 200mm Width x 160mm Height	B5	1/700
0690VB	Domestic 170mm Length x 250mm Width x 220mm Height	B5	1/400

DOMESTIC BOX ROUND - LIDS and BASES

CODE	DESCRIPTION	DISC CODE	CTN/PLT QTY
HR-SPOTTERLID	Lid 135mm suits HR-SPOTTERBOX	B5	1/-
HR-SPOTTERBASE	Base 150mm deep suits HR-SPOTTERBOX	B5	1/-
HR0690LSE	Lid 170mm suits HR-0690-SVBSE	B5	1/-
HR0690-SB	Base 160mm deep suits HR-0690-SVBSE	B5	1/-
0690L	Lid 170mm suits HR0690-SVB and 0690VB	B5	1/-
HR0690-SB	Base 160mm deep suits HR0690-SVB	B5	1/-
0690B	Base 220mm deep suits 0690VB	B5	1/-



HR-SPOTTERBOX



HR06TLA



HR0690-SVB



HR-0690-SVBSE



0690VB

** Minimum quantity buys apply. Please refer to your Sales Manager for further details.

DOMESTIC VALVE BOX - Round

Protects in-ground irrigation valves, functions as a durable enclosure that provides easy access to valves for maintenance.

Used in turf applications to house either single valves, multiple valves, or other subsurface components of an irrigation system.

FEATURES



- 100% Australian Made
- Moulded from recycled & virgin materials
- Light weight robust construction
- Personalised customer detail option / special application marking and colouring**
- Reclaimed water detail
- Suitable for light duty residential applications

DOMESTIC BOX ROUND - RECLAIMED WATER

CODE	DESCRIPTION	DISC CODE	CTN/PLT QTY
HR0690-SVBRW	Econo 170mm Length x 200mm Width x 160mm Height - Purple Lid Black Base	B5	1/700
0690VBRW	Domestic 170mm Length x 250mm Width x 220mm Height - Purple Base and Lid	B5	1/400



HR0690-SVBRW

DOMESTIC BOX ROUND RECLAIMED WATER - LIDS and BASES

CODE	DESCRIPTION	DISC CODE	CTN /PLT QTY
0690LRW	Purple Lid Round 170mm suits 0690VBRW	B5	1/-
HR0690-SB	Black Base 160mm deep suits HR0690-SVB (No Purple Version available)	B5	1/-
0690BRW	Purple Base 220mm deep suits 0690VBRW	B5	1/-



0690VBRW

	EXTERNAL DIMENSIONS (MM)					INTERNAL DIMENSIONS (MM)	
	TOP LENGTH	TOP WIDTH	HEIGHT	BOTTOM LENGTH	BOTTOM WIDTH	TOP OPENING	BASE OPENING
HR MANUFACTURED DOMESTIC VALVE BOX - Round							
HR-SPOTTERBOX	135	135	150	175	175	125	150
HR-06TLA	130	130	160	205	205	125	180
HR-0690-SVBSE	170	170	155	250	250	150	205
HR0690-SVB	170	170	160	200	200	150	180
0690VB	170	170	220	250	250	150	205
HR0690-SVBRW	170	170	160	200	200	150	180
0690VBRW	170	170	220	250	250	150	205

** Minimum quantity buys apply. Please refer to your Sales Manager for further details.

DOMESTIC VALVE BOX - Square

Protects in-ground irrigation valves, functions as a durable enclosure that provides easy access to valves for maintenance.

Used in turf applications to house either single valves, multiple valves, or other subsurface components of an irrigation system.

FEATURES



- 100% Australian Made
- Moulded from recycled & virgin materials
- Light weight robust construction
- Personalised customer detail option / special application marking and colouring**
- Reclaimed water detail / option (purple lid and base)
- Suitable for light duty residential applications

DOMESTIC BOX SQUARE

CODE	DESCRIPTION	DISC CODE	CTN/PLT QTY
HR606-6SQVB	Econo 152mm Length x 210mm Width x 160mm Height	B5	1/400
HR606SQVB	Domestic 152mm Length x 235mm Width x 215mm Height	B5	1/250
HR909-8VB	Domestic 215mm Length x 310mm Width x 210mm Height	B5	1/150
HR909SQVB	Domestic 215mm Length x 315mm Width x 260mm Height	B5	1/100



HR606-6SQVB



HR606SQVB



HR909-8VB



HR909SQVB

DOMESTIC BOX SQUARE - LIDS and BASES

CODE	DESCRIPTION	DISC CODE	CTN/PLT QTY
HR606SQL	Lid 152mm suits HR606-6SQVB and HR606SQVB	B5	1/-
HR606-6SQB	Base 160mm deep suits HR606-6SQVB	B5	1/-
HR606SQB	Base 215mm deep suits HR606SQVB	B5	1/-
HR909SQL	Lid 215mm suits HR909-8VB and HR909SQVB	B5	1/-
HR909-8B	Base 210mm deep suits HR909-8VB	B5	1/-
HR909SQB	Base 260mm deep suits HR909SQVB	B5	1/-

** Minimum quantity buys apply. Please refer to your Sales Manager for further details.

DOMESTIC VALVE BOX - Square

Protects in-ground irrigation valves, functions as a durable enclosure that provides easy access to valves for maintenance.

Used in turf applications to house either single valves, multiple valves, or other subsurface components of an irrigation system.

FEATURES



- 100% Australian Made
- Moulded from recycled & virgin materials
- Light weight robust construction
- Personalised customer detail option / special application marking and colouring**
- Reclaimed water detail / option - Entire box and lid in purple with optional extra customer detail upon request**
- Suitable for light duty residential applications



HR606-6SQVBRW



HR606SQVBRW



HR909-8VBRW



HR909SQVBRW

DOMESTIC BOX SQUARE - RECLAIMED WATER

CODE	DESCRIPTION	DISC CODE	CTN/PLT QTY
HR606-6SQVBRW	Domestic 152mm Length x 210mm Width x 160mm Height - Purple Base and Lid	B5	1/400
HR606SQVBRW	Domestic 152mm Length x 235mm Width x 215mm Height - Purple Base and Lid	B5	1/250
HR909-8VBRW	Domestic 215mm Length x 310mm Width x 210mm Height - Purple Base and Lid	B5	1/150
HR909SQVBRW	Domestic 215mm Length x 315mm Width x 260mm Height - Purple Base and Lid	B5	1/100

DOMESTIC BOX SQUARE RECLAIMED WATER - LIDS ONLY

CODE	DESCRIPTION	DISC CODE	CTN/PLT QTY
HR606SQLRW	Purple Lid 152mm Square suits HR606 Series	B5	1/-
HR909SQLRW	Purple Lid 215mm Square suits HR909 Series	B5	1/-

	EXTERNAL DIMENSIONS (MM)					INTERNAL DIMENSIONS (MM)	
	TOP LENGTH	TOP WIDTH	HEIGHT	BOTTOM LENGTH	BOTTOM WIDTH	TOP OPENING	BASE OPENING
HR MANUFACTURED DOMESTIC VALVE BOX - Square							
HR606-6SQVB	152	152	160	210	210	135	185
HR606SQVB	152	152	215	235	235	130	175
HR909-8VB	215	215	210	310	310	195	245
HR909SQVB	215	215	260	315	315	190	250
HR606-6SQVBRW	152	152	160	210	210	135	185
HR606SQVBRW	152	152	215	235	235	130	175
HR909-8VBRW	215	215	210	310	310	195	245
HR909SQVBRW	215	215	260	315	315	190	250

** Minimum quantity buys apply. Please refer to your Sales Manager for further details.

DOMESTIC VALVE BOX - Rectangular

Protects in-ground irrigation valves, functions as a durable enclosure that provides easy access to valves for maintenance.

Used in turf applications to house either single valves, multiple valves, or other subsurface components of an irrigation system.

FEATURES



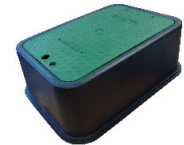
- 100% Australian Made
- Moulded from recycled & virgin materials
- Light weight robust construction
- Personalised customer detail option / special application marking and colouring*
- Reclaimed water detail / option (purple lid)
- Suitable for light duty residential applications

DOMESTIC BOX RECTANGLE

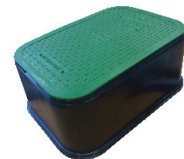
CODE	DESCRIPTION	DISC CODE	CTN /PLT QTY
HR906VB	Domestic 220mm Length x 155mm Width x 215mm Height	B5	1/380
HR1419-6VB	Domestic 425mm Length x 295mm Width x 165mm Height	B5	1/104
HR1419-7VBOL	Domestic 430mm Length x 295mm Width x 190mm Height	B5	1/104
HR1420-6VBOL	Domestic 550mm Length x 390mm Width x 165mm Height	B5	1/52



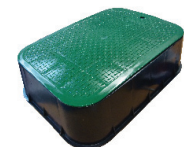
HR906VB



HR1419-6VB



HR1419-7VBOL



HR1420-6VBOL

DOMESTIC BOX RECTANGLE - LIDS and BASES

CODE	DESCRIPTION	DISC CODE	CTN/PLT QTY
HR906L	Lid 220mm Long x 155mm Wide suits HR906VB	B5	1/-
HR906B	Base 215mm deep suits HR906VB	B5	1/-
HR1419-6L	Lid 425mm Long x 295mm Wide suits HR1419-6VB	B5	1/-
HR1419-6B	Base 165mm deep suits HR1419-6VB	B5	1/-
HR1419-70L	Lid 430mm Long x 295mm Wide suits HR1419-7VBOL	B5	1/-
HR1419-70LB	Base 190mm deep suits HR1419-7VBOL	B5	1/-
HR1420-6L	Lid 550mm Long x 390mm Wide suits HR1420-6VBOL	B5	1/-
HR1420-6B	Base 165mm deep suits HR1420-6VBOL	B5	1/-

** Minimum quantity buys apply. Please refer to your Sales Manager for further details.

DOMESTIC VALVE BOX - Rectangular

Protects in-ground irrigation valves, functions as a durable enclosure that provides easy access to valves for maintenance.

Used in turf applications to house either single valves, multiple valves, or other subsurface components of an irrigation system.

FEATURES



- 100% Australian Made
- Moulded from recycled & virgin materials
- Light weight robust construction
- Personalised customer detail option / special application marking and colouring**
- Reclaimed water detail
- Suitable for light duty residential applications

DOMESTIC BOX RECTANGLE - RECLAIMED WATER

CODE	DESCRIPTION	DISC CODE	CTN /PLT QTY
HR906VBRW	Domestic 220mm Length x 155mm Width x 215mm Height - Purple Lid Black Base	B5	1/380
HR1419-6VBRW	Domestic 425mm Length x 295mm Width x 165mm Height - Purple Lid Black Base	B5	1/104
HR1420-6VBOLRW	Domestic 550mm Length x 390mm Width x 165mm Height - Purple Lid Black Base	B5	1/52



HR906VBRW



HR1419-6VBRW



HR1420-6VBOLRW

DOMESTIC BOX RECTANGLE RECLAIMED WATER - LIDS ONLY

CODE	DESCRIPTION	DISC CODE	CTN/ PLT QTY
HR906LRW	Purple Lid Rectangle 220mm Long x 155mm Wide	B5	1/-
HR1419-6LRW	Purple Lid Rectangle 425mm Long x 295mm Wide suits HR1419-6VBRW	B5	1/-
HR1420-60LRW	Purple Lid Rectangle 550mm Long x 390mm Wide suits HR1420-6VBOL	B5	1/-

	EXTERNAL DIMENSIONS (MM)					INTERNAL DIMENSIONS (MM)	
	TOP LENGTH	TOP WIDTH	HEIGHT	BOTTOM LENGTH	BOTTOM WIDTH	TOP OPENING	BASE OPENING

HR MANUFACTURED DOMESTIC VALVE BOX - Rectangle							
HR906VB	220	155	215	285	220	200 x 140	250 x 185
HR1419-6VB	425	295	165	470	345	360 x 230	435 x 310
HR1419-7VBOL	430	295	190	480	445	350 x 220	450 x 310
HR1420-6VBOL	550	390	165	600	430	490 x 325	570 x 400
HR906VBRW	220	155	215	285	220	200 x 140	250 x 185
HR1419-6VBRW	425	295	165	470	345	360 x 230	435 x 310
HR1420-6VBOLRW	550	390	165	600	430	490 x 325	570 x 400

** Minimum quantity buys apply. Please refer to your Sales Manager for further details.



VALVE BOXES



DURA VALVE BOX - Round

FEATURES

- T-lip lid design to prevent dirt jamming lid lift
- Snap lid for easy access
- Lid engraved with "Irrigation Control Valve"
- Pipe cut-outs
- Robust construction
- Single bolt hole - no bolt provided
- For use in non-vehicular traffic areas
- Reclaimed water detail
- Suitable for general light commercial applications*

DURA VALVE BOX ROUND

CODE	DESCRIPTION	DISC CODE	CTN/PLT QTY
D0910VB	250mm Length x 320mm Width x 260mm Height	B5	1/156



D0910VB

DURA VALVE BOX ROUND - LIDS and BASES

CODE	DESCRIPTION	DISC CODE	CTN/PLT QTY
D0910L	Lid Round 250mm	B5	1/-
D0910B	Base 260mm High suits D0910VB	B5	1/-

DURA VALVE BOX ROUND - RECLAIMED WATER

CODE	DESCRIPTION	DISC CODE	CTN/PLT QTY
D0910VBRW	Round 250mm Length x 320mm Width x 260mm Height - Purple Base and Lid	B5	1/156



D0910VBRW

DURA VALVE BOX ROUND RECLAIMED WATER - LIDS and BASES

CODE	DESCRIPTION	DISC CODE	CTN/PLT QTY
D0910LRW	Purple Lid 250mm Round	B5	1/-
D0910BRW	Purple Base 260mm High suits D0910VBRW	B5	1/-

	EXTERNAL DIMENSIONS (MM)					INTERNAL DIMENSIONS (MM)	
	TOP LENGTH	TOP WIDTH	HEIGHT	BOTTOM LENGTH	BOTTOM WIDTH	TOP OPENING	BASE OPENING
DURA VALVE BOX - Round							
D0910VB	250	250	260	320	320	210	290
D0910VBRW	250	250	260	320	320	210	290

* Please consult your local authority for load rating requirements for sites with heavy vehicular traffic site access. A higher graded product may be required.

DURA VALVE BOX - Rectangular

FEATURES

- Suits manifold of multiple valves or larger valves
- Standard depth profile suits most commercial jobs
- T-lip lid design to prevent dirt jamming lid lift
- Snap lid for easy access
- Lid engraved with "Irrigation Control Valve"
- Pipe cut-outs
- Robust construction
- Single bolt hole - no bolt provided
- For use in non-vehicular traffic areas
- Suitable for general light commercial applications*

DURA VALVE BOX RECTANGLE

CODE	DESCRIPTION	DISC CODE	CTN/PLT QTY
D1419-6VB	430mm Length x 305mm Width x 180mm Height	B5	1/98
D1419-12VB	430mm Length x 305mm Width x 310mm Height	B5	1/72
D1420-6VB	540mm Length x 380mm Width x 180mm Height	B5	1/56
D1420-12VB	540mm Length x 380mm Width x 330mm Height	B5	1/48

DURA VALVE BOX RECTANGLE - LIDS and BASES

CODE	DESCRIPTION	DISC CODE	CTN /PLT QTY
D1419-12VBL	Lid Rectangle 430mm Long x 305mm Wide suits D1419-6VB & 12VB	B5	1/-
D1420-12VBL	Lid Rectangle 540mm Long x 380mm Wide suits D1420-6VB & 12VB	B5	1/-
D1419-6B	Base 180mm deep suits D1419-6VB	B5	1/-
D1420-12B	Base 330mm deep suits D1420-12VB	B5	1/-



D1419-6VB



D1419-12VB



D1420-6VB



D1420-12VB

* Please consult your local authority for load rating requirements for sites with heavy vehicular traffic site access. A higher graded product may be required.

DURA VALVE BOX - Rectangular

FEATURES

- Suits manifold of multiple valves or larger valves
- Standard depth profile suits most commercial jobs
- T-lip lid design to prevent dirt jamming lid lift
- Snap lid for easy access
- Lid engraved with "Irrigation Control Valve"
- Pipe cut-outs
- Robust construction
- Single bolt hole - no bolt provided
- For use in non-vehicular traffic areas
- Suitable for general light commercial applications*

DURA VALVE BOX RECTANGLE - RECLAIMED WATER

CODE	DESCRIPTION	DISC CODE	CTN/PLT QTY
D1419-6VBRW	430mm Length x 305mm Width x 180mm Height - Purple Base and Lid	B5	1/98
D1419-12VBRW	430mm Length x 305mm Width x 310mm Height - Purple Base and Lid	B5	1/72
D1420-12VBRW	540mm Length x 380mm Width x 330mm Height - Purple Base and Lid	B5	1/48



D1419-6VBRW



D1419-12VBRW



D1420-12VBRW

DURA VALVE BOX RECTANGLE RECLAIMED WATER - LIDS ONLY

CODE	DESCRIPTION	DISC CODE	CTN/PLT QTY
D1419-12VBLRW	Purple Lid Rectangle 430mm Long x 305mm Wide suits D1419-12VBRW	B5	1/-
D1420-LRW	Purple Lid Rectangle 540mm Long x 380mm Wide suits D1420-12VBRW	B5	1/-

	EXTERNAL DIMENSIONS (MM)					INTERNAL DIMENSIONS (MM)	
	TOP LENGTH	TOP WIDTH	HEIGHT	BOTTOM LENGTH	BOTTOM WIDTH	TOP OPENING	BASE OPENING

DURA VALVE BOX - Rectangle							
D1419-6VB	430	305	180	490	360	355 x 240	445 x 315
D1419-12VB	430	305	310	545	390	360 x 240	500 x 350
D1420-6VB	540	380	180	615	450	465 x 325	560 x 395
D1420-12VB	540	380	330	650	480	465 x 325	595 x 430
D1419-6VBRW	430	305	180	490	360	355 x 240	445 x 315
D1419-12VBRW	430	305	310	545	390	360 x 240	500 x 350
D1420-12VBRW	540	380	330	650	480	465 x 325	595 x 430

* Please consult your local authority for load rating requirements for sites with heavy vehicular traffic site access. A higher graded product may be required.



We put water in its place

VALVE BOXES



NDS® STANDARD SERIES VALVE BOX - Round

FEATURES

- Covers are identified with ICV (Irrigation Control Valve) designation, unless otherwise specified
- Overlapping covers prevent dirt and grass from settling between body and cover making it easier to remove over time
- UV inhibitors prevent discolouration and deterioration, such as cracking or blistering

NDS® STANDARD SERIES VALVE BOX ROUND

CODE	DESCRIPTION	DISC CODE	CTN/PLT QTY
809-VB	NDS 165mm Length x 210mm Width x 235mm Height	B5	1/250



809-VB

NDS® STANDARD SERIES VALVE BOX ROUND - LIDS and BASES

CODE	DESCRIPTION	DISC CODE	CTN/PLT QTY
809-LID	Lid Round 165mm, suits NDS 809-VB	B5	1/-
809-BODY	Base 235mm deep suits NDS 809-VB	B5	1/-

	EXTERNAL DIMENSIONS (MM)					INTERNAL DIMENSIONS (MM)	
	TOP LENGTH	TOP WIDTH	HEIGHT	BOTTOM LENGTH	BOTTOM WIDTH	TOP OPENING	BASE OPENING

NDS® STANDARD SERIES VALVE BOX - Round							
809-VB	165	165	235	210	210	140	190

NDS® STANDARD SERIES VALVE BOX - Rectangular

FEATURES

- Covers are identified with ICV (Irrigation Control Valve) designation, unless otherwise specified
- Overlapping covers prevent dirt and grass from settling between body and cover making it easier to remove over time
- UV inhibitors prevent discolouration and deterioration, such as cracking or blistering

NDS® STANDARD SERIES VALVE BOX RECTANGLE

CODE	DESCRIPTION	DISC CODE	CTN/PLT QTY
1320-13B	NDS 540mm Length x 375mm Width x 320mm Height	B5	1/56



1320-13B

NDS® STANDARD SERIES VALVE BOX RECTANGLE - LIDS ONLY

CODE	DESCRIPTION	DISC CODE	CTN/PLT QTY
1320-LID	Lid Rectangle 540mm Long x 375mm Wide suits NDS 1320-13B	B5	1/-

EXTERNAL DIMENSIONS (MM)					INTERNAL DIMENSIONS (MM)		
TOP LENGTH	TOP WIDTH	HEIGHT	BOTTOM LENGTH	BOTTOM WIDTH	TOP OPENING	BASE OPENING	

NDS® STANDARD SERIES VALVE BOX - Rectangle							
1320-13B	540	375	320	645	480	465 x 320	600 x 430

NDS® PRO-SPEC™ SERIES VALVE BOX - Rectangular

FEATURES

- Specification grade valve boxes for professional applications
- Corrugated sidewalls provide greater strength
- Overlapping covers prevent dirt and grass from settling between body and cover making it easier to remove over time
- High impact, high density injection molded structural foam polyethylene construction
- UV inhibitors prevent discolouration and deterioration, such as cracking or blistering

NDS® PRO-SPEC™ SERIES VALVE BOX RECTANGLE

CODE	DESCRIPTION	DISC CODE	CTN/PLT QTY
1324-C	NDS 650mm Length x 410mm Width x 390mm Height	B5	1/12
1730-D	NDS 830mm Length x 500mm Width x 390mm Height	B5	1/6



1324-C



1730-D

NDS® PRO-SPEC™ SERIES VALVE BOX RECTANGLE - LIDS ONLY

CODE	DESCRIPTION	DISC CODE	CTN/PLT QTY
1324-LID	Lid Rectangle 650mm Long x 410mm Wide, suits NDS 1324-C	B5	1/-
1730-LID	Lid Rectangle 830mm Long x 500mm Wide, suits NDS 1730-D	B5	1/-

	EXTERNAL DIMENSIONS (MM)					INTERNAL DIMENSIONS (MM)	
	TOP LENGTH	TOP WIDTH	HEIGHT	BOTTOM LENGTH	BOTTOM WIDTH	TOP OPENING	BASE OPENING
NDS® PRO-SPEC™ SERIES VALVE BOX - Rectangle							
1324-C	650	410	390	835	590	555 x 310	750 x 510
1730-D	830	500	390	1010	685	740 x 415	935 x 605



AEP

VALVE BOXES



AEP VALVE BOX - Rectangular

FEATURES

- Heavy duty commercial construction
- Overlapping covers prevent dirt and grass from settling between body and cover making it easier to remove over time
- UV inhibitors prevent discolouration and deterioration, such as cracking or blistering
- Water Meter Latch version available
- For use in non-vehicle traffic area

AEP VALVE BOX RECTANGULAR

CODE	DESCRIPTION	DISC CODE	CTN/PLT QTY
1420-12VB	AEP 545mm Length x 385mm Width x 290mm Height	B5	1/40
1420-12VBWM	AEP 545mm Length x 385mm Width x 290mm Height, with Water Meter Latch Lid	B5	1/40
1324VB	AEP 660mm Length x 420mm Width x 390mm Height	B5	1/20
1324VBWM	AEP 660mm Length x 420mm Width x 390mm Height, with Water Meter Latch Lid	B5	1/20
1730VB	AEP 835mm Length x 520mm Width x 390mm Height	B5	1/16



1420-12VB



1324VB



1730VB

AEP VALVE BOX RECTANGULAR - LIDS and BASES

CODE	DESCRIPTION	DISC CODE	CTN/PLT QTY
1420-12L	Lid Rectangle 545mm Length x 385mm Width, suits AEP 1420-12VB	B5	1/-
1324L	Lid Rectangle 660mm Length x 420mm Width, suits AEP 1324VB	B5	1/-
1324WML	Lid Rectangle 660mm Length x 420mm Width, suits AEP 1324VBWM Water Meter Latch Lid	B5	1/-
1730L	Lid Rectangle 835mm Length x 520mm Width, suits AEP 1730VB	B5	1/-
1420-12B	Base Rectangle 290mm deep suits 1420-12VB	B5	1/-
1324B	Base Rectangle 390mm deep suits 1324VB	B5	1/-

	EXTERNAL DIMENSIONS (MM)					INTERNAL DIMENSIONS (MM)	
	TOP LENGTH	TOP WIDTH	HEIGHT	BOTTOM LENGTH	BOTTOM WIDTH	TOP OPENING	BASE OPENING

AEP VALVE BOX - Rectangle							
1420-12VB	545	385	290	640	485	445 x 305	590 x 430
1420-12VBWM	545	385	290	640	485	445 x 305	590 x 430
1324VB	660	420	390	805	565	520 x 320	735 x 490
1324VBWM	660	420	390	805	565	520 x 320	735 x 490
1730VB	835	520	390	990	655	700 x 415	910 x 585

NOTES

NOTES



A **valmont**  COMPANY



MANUFACTURERS, IMPORTERS & DISTRIBUTORS OF QUALITY IRRIGATION EQUIPMENT

PERTH
PH: 08 9484 6500
FAX: 08 9455 1680
hrsales@hrproducts.com.au

SYDNEY
PH: 02 9616 1300
FAX: 02 9725 5283
infonsw@hrproducts.com.au

MELBOURNE
PH: 03 8458 7400
FAX: 03 9457 7400
infovic@hrproducts.com.au

BRISBANE
PH: 07 3080 6200
FAX: 07 3806 0533
infoqld@hrproducts.com.au

ADELAIDE
PH: 08 8408 7200
FAX: 08 8341 0707
infosa@hrproducts.com.au

