



PRODUCT SPECIFICATION

FERTILISER INJECTORS

Ferti-Gator™ SOLO Single Channel Venturi Injector Fertigation Machine

The Ferti-Gator™ SOLO single channel fertigation machine is an accurate chemical dosing unit with optimal energy efficiency. The Fert-Gator™ SOLO machine can be operated as an independent stand alone unit or integrated into the i-Gator irrigation control system. Each machine is equipped with a (HMI) touch screen providing a simple user friendly interface.

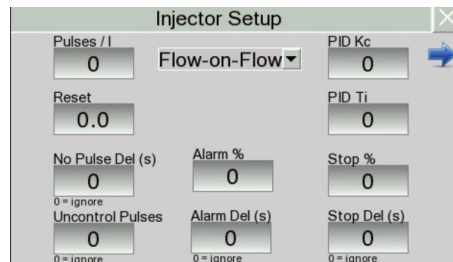
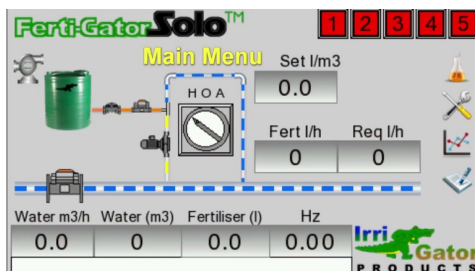
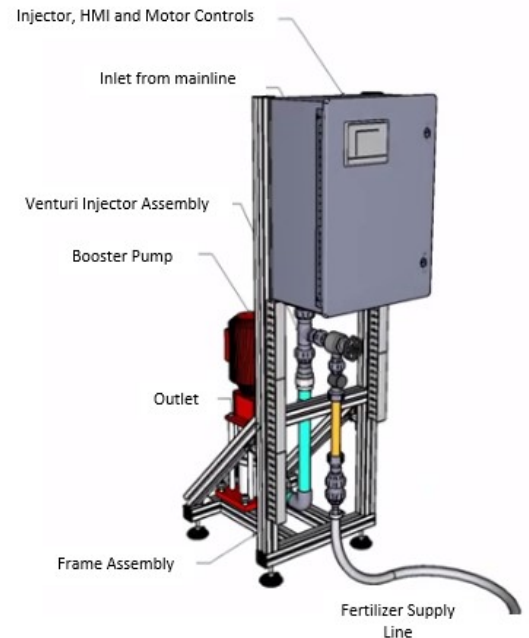
Dosing is performed on a flow on flow basics. In stand alone mode 5 dosing recipes are available to be set by owner and these can be selected manually when the Ferti-Gator™ SOLO machine is set to operate in Manual mode or can be activated from an external device when set to run in Auto mode.

The injector fitted is capable of a maximum injection rates of 400L/hr.

The 0.75kW booster pump is fitted with a variable speed drive and the internal logic system controls that regulate boost pressure only to the absolute minimum required. This advanced feature makes the Ferti-Gator™ machine the most energy efficient machine on the market. (Pump unit capable of a maximum injection pressure of 500kpa)

Main Features:

- The most energy efficient venturi dosing system available on the market. Incorporates variable speed control of the booster pump with automatic boost pressure regulation based on the systems main line pressure.
- A machine with a compact footprint requiring minimal space.
- A built in colour touch screen HMI (Human-Machine Interface) that offers a simple menu driven setup, control and monitoring making this machine easy to use.
- Advanced electronics that offer accurate dosing using built in algorithms. Multiple recipes that can be activated as set points from any external source or through the HMI.
- Can be used as an independent stand alone machine, integrated seamlessly with the iGator™ irrigation control system or even used in conjunction with other control systems.



Pre Set 5 Fertigation Recipes					
	1	2	3	4	5
m3/h	0.0	0.0	0.0	0.0	0.0
l/m3	0.0	0.0	0.0	0.0	0.0

MODELS	CODE
Ferti-Gator 400l/hr - 1 Channel - 1 Phase - 5bar	FG400L1C1P5B

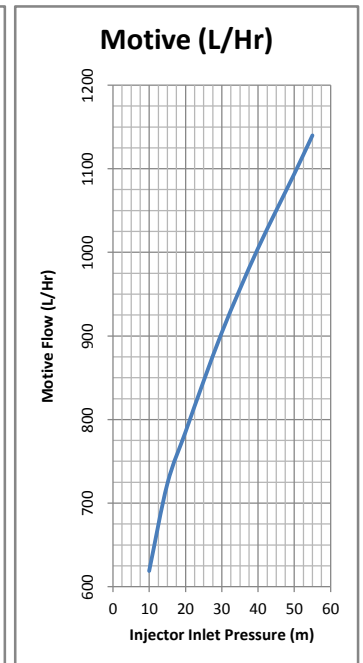
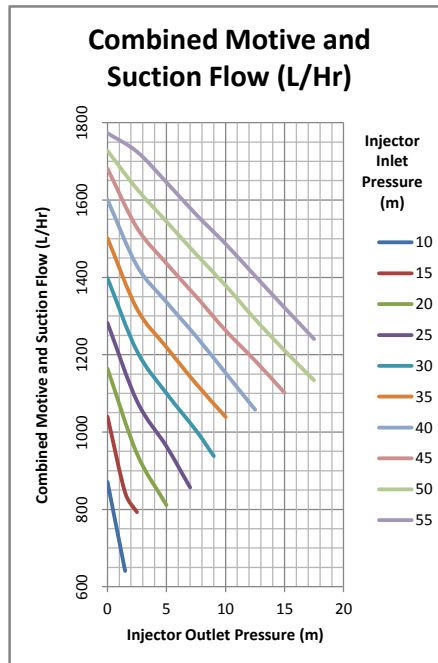
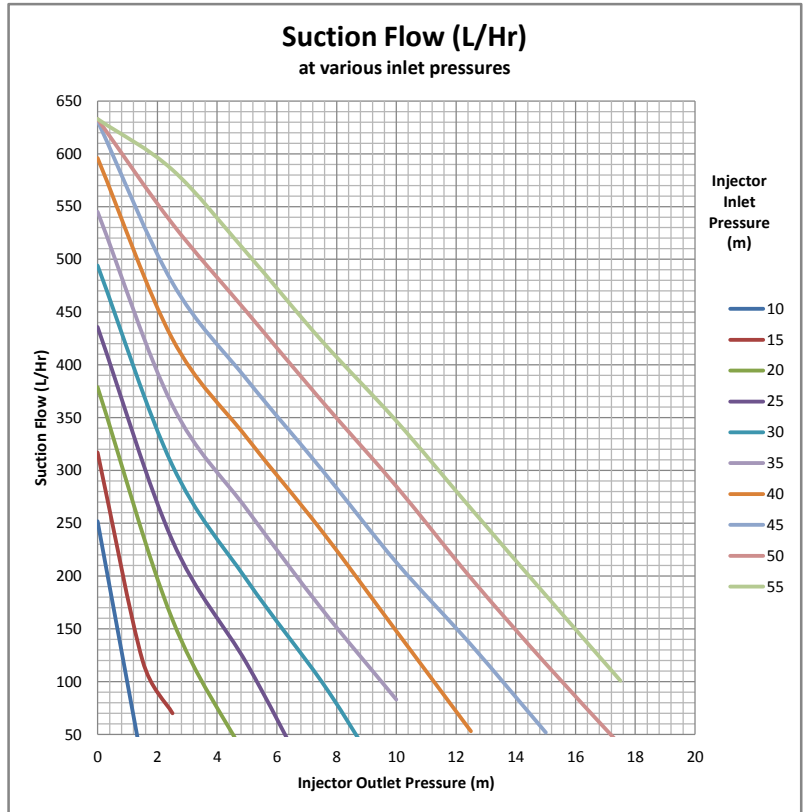
SOLO Machines Include: Ferti-Gator™ Controller with HMI, Frame, Pump, Variable Speed Drive, System Hydraulics, One 400 l/h Injection Channel incorporating a Venturi, Diaphragm Valve, Mini Fert Meter, Rotameter and Non Return Valve.

www.hrproducts.com.au



PERTH	SYDNEY	MELBOURNE	BRISBANE	ADELAIDE
PH: 08 9484 6500	PH: 02 9616 1300	PH: 03 8458 7400	PH: 07 3080 6200	PH: 08 8408 7200
FAX: 08 9455 1680	FAX: 02 9725 5283	FAX: 03 9457 7400	FAX: 07 3806 0533	FAX: 08 8341 0707
hrsales@hrproducts.com.au	infonsw@hrproducts.com.au	infovic@hrproducts.com.au	infoqld@hrproducts.com.au	infosad@hrproducts.com.au

Inlet	Pressure (m)		Flow (L/Hr)		
	Outlet	Differential	Suction	Motive	Combined (motive and suction)
10	0	10	252	619	871
	1.5	8.5	22		641
15	0	15	317	723	1040
	1.5	13.5	120		843
	2.5	12.5	70		793
20	0	20	379	785	1164
	2.5	17.5	159		944
	5	15	26		811
25	0	25	436	846	1282
	2.5	22.5	234		1080
	5	20	117		963
	7	18	11		857
30	0	30	494	904	1398
	2.5	27.5	305		1209
	5	25	196		1100
	7.5	22.5	100		1004
	9	21	34		938
35	0	35	545	956	1501
	2.5	32.5	362		1318
	5	30	263		1219
	7.5	27.5	169		1125
	10	25	83		1039
40	0	40	596	1005	1601
	2.5	37.5	425		1430
	5	35	331		1336
	7.5	32.5	243		1248
	10	30	148		1153
	12.5	27.5	53		1058
45	0	45	631	1050	1681
	2.5	42.5	478		1528
	5	40	386		1436
	7.5	37.5	301		1351
	10	35	213		1263
	12.5	32.5	135		1185
50	0	50	633	1094	1727
	2.5	47.5	534		1628
	5	45	450		1544
	7.5	42.5	366		1460
	10	40	285		1379
	12.5	37.5	198		1292
	15	35	117		1211
55	0	55	633	1140	1773
	2.5	52.5	585		1725
	5	50	506		1646
	7.5	47.5	423		1563
	10	45	347		1487
	12.5	42.5	264		1404
	15	40	182		1322
	17.5	37.5	101	1241	



Notes relating to performance tests -

Tests were performed using standard filtered water for the motive and suction liquids and as such performance may vary when chemicals are injected due to differing liquid SG and viscosity factors.

Tests were performed with the suction inlet water level at the same level as the injectors suction intake.

Tests were performed using a standard venturi injectors suction assembly which excluded a solenoid or or modulating valve in the assembly. Other valves in the suction assembly were in the fully open position.

Performance data provided is accurate to with ±10%.